

# Tech Sheet: Gulfstream Aerospace Gulfstream V, VI (C-37A), G450, G550, G650

(gulfstream-aerospace-G5.pdf)



Exterior Covers for the Bombardier Global Express

## Section 1: Canopy/Cockpit/Fuselage Covers

The **Gulfstream Aerospace Gulfstream V, VI (C-37A), G450, G550, G650 Cockpit Cover** helps reduce damage to the upholstery and avionics caused by excessive heat and can eliminate problems caused by leaking door and window seals. They keep the windshield and window surfaces clean and help prevent vandalism and theft.

The **Gulfstream Aerospace Gulfstream V, VI (C-37A), G450, G550, G650 Cockpit Cover** is designed to cover the windshield and side windows of the cockpit. Attachment buckles are made of nonmetal *Delrin*, designed for rugged outdoor use. The windshield cover comes with a duffle bag. The N-number can be imprinted onto the cover for an extra charge. The windshield cover is trimmed in the colors of the aircraft.

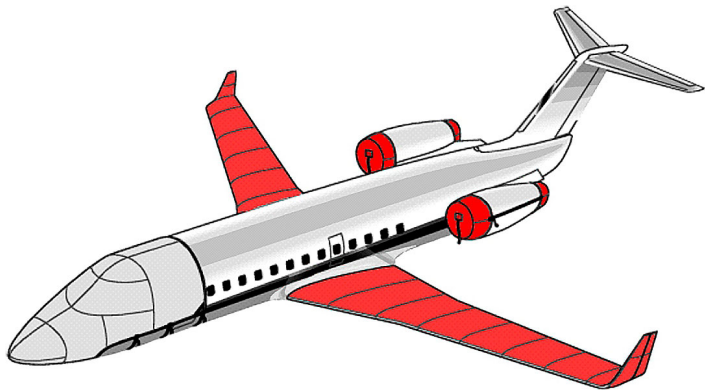
This cover type is made from Silver Acrylic Sunbrella canvas and is 100% lined with a soft and smooth microfiber. Bruce's Custom Covers developed this material combination especially for aircraft protection. The outer material is medium weight and treated for water resistance, UV resistance and anti-static buildup. The inner lining is a very soft and smooth microfiber to prevent scratching. The material is very reflective, and tests show that the cabin interior temperature can be reduced to near-ambient temperature on the hottest of days. It is water, ice and snow repellent, yet breathable to allow moisture to escape from between the cover and the aircraft surface.

The **Gulfstream Aerospace Gulfstream V, VI (C-37A), G450, G550, G650 Cockpit/Nose Cover** helps reduce damage to the upholstery and avionics caused by excessive heat and can eliminate problems caused by leaking door and window seals. They keep the windshield and window surfaces clean and help prevent vandalism and theft.

The **Gulfstream Aerospace Gulfstream V, VI (C-37A), G450, G550, G650 Cockpit/Nose Cover** is designed to cover the windshield and side windows of the cockpit. Attachment buckles are made of nonmetal *Delrin*, designed for rugged outdoor use. The windshield cover comes with a duffle bag. The N-number can be imprinted onto the cover for an extra charge. The windshield

cover is trimmed in the colors of the aircraft.

This cover type is made from Silver Acrylic Sunbrella canvas and is 100% lined with a soft and smooth microfiber. Bruce's Custom Covers developed this material combination especially for aircraft protection. The outer material is medium weight and treated for water resistance, UV resistance and anti-static buildup. The inner lining is a very soft and smooth microfiber to prevent scratching. The material is very reflective, and tests show that the cabin interior temperature can be reduced to near-ambient temperature on the hottest of days. It is water, ice and snow repellent, yet breathable to allow moisture to escape from between the cover and the aircraft surface.



Exterior Covers for the Bombardier Global Express



G-V Cockpit/Windshield Cover (Illustration)

Description	Part Number	Price
COCKPIT/NOSE COVER (G450 & G550)	G5-000	\$3685.00
COCKPIT COVER (G450 & G550)	G5-010	\$1900.00

Section 2: Engine Covers

**3-Strap Engine Covers** are designed to install easily yet be completely storable. These soft covers feature a strap across the top of the nacelle, and two tightening straps along each side of the nacelle belly. 3-Strap Covers are designed to be left-right interchangeable, and are intended for long term use out of doors. They are made of medium weight Solution-Dyed Polyester which is available in a variety of colors. The aircraft's registration number can be silkscreened onto the cover for an extra charge.

ALL-YEAR USE MATERIAL - Made with Solution dyed Polyester fabric, the all-year use material is the best option for sun protection and cover longevity. This heavier more durable material is intended for all weather conditions, such as rain and snow or lots of sun.

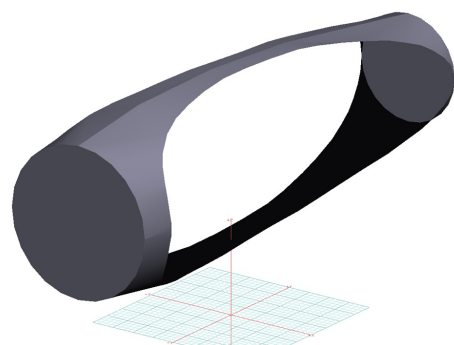
**Tri-Fold Ring Engine Covers** are designed to install easily yet be completely storable. A spring steel hoop is sewn into the hem of each cover, allowing them to be installed without climbing onto the wing or using a stepladder in many cases. To store the covers the spring steel hoop folds like a band-saw blade into three nesting rings. Each cover folds into a compact circular bundle which is stored in the included duffle bag, yet they unfold quickly for use. The Tri-Fold Ring cover is made of medium weight Solution-Dyed Polyester which is available in a variety of colors to match the paint trim. Each cover set comes complete with installation and folding instructions. The aircraft's registration number can be silkscreened onto the cover for an extra charge.

ALL-YEAR USE MATERIAL - Made with Solution dyed Polyester fabric, the all-year use material is the best option for sun protection and cover longevity. This heavier more durable material is intended for all weather conditions, such as rain and snow or lots of sun.

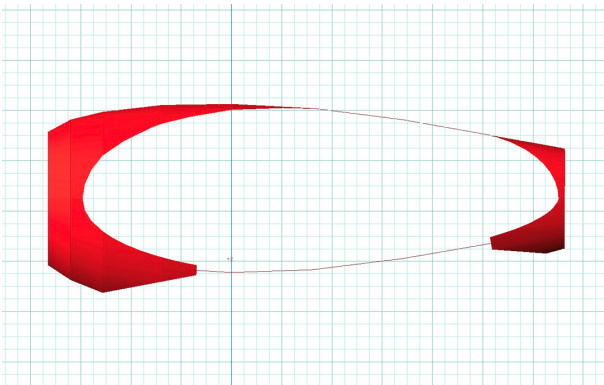
The **Gulfstream Aerospace Gulfstream V, VI (C-37A), G450, G550, G650 Bikini Style Engine Covers** are a single-piece design using a soft and smooth stretchy fabric. The cover stretches tightly over both the intake and exhaust, installing quickly and easily. These covers are designed to be used as hangar dust covers and have a useful life of approximately one year.

The **Gulfstream Aerospace Gulfstream V, VI (C-37A), G450, G550, G650 Intake Covers** are designed to install easily yet be

completely storable. A spring steel hoop is sewn into the hem of each cover, allowing them to be installed without climbing onto the wing or using a stepladder. To store the covers the spring steel hoop folds like a band-saw blade into three nesting rings. Each cover folds into a compact circular bundle which is stored in the included duffle bag, yet they unfold quickly for use. The Tri-Fold Ring cover is made of medium weight nylon which is available in a variety of colors to match the paint trim. Each cover set comes complete with installation and folding instructions. The aircraft's registration number can be silkscreened onto the cover for an extra charge.



Gulfstream G550 Engine Covers, Bikini Type (3D Model)



Hawker Beechcraft Premier Engine Covers, 3-Strap Style

Description	Part Number	Price
INTAKE COVERS (set of 2)	G5-110	\$2075.00
INSULATED NACELLE COVERS (set of 2)	G5-115	\$4030.00
ENGINE COVERS, Hangar Use, Bikini Type (set of 2)	G5-135	\$905.00
INTAKE/EXHAUST COVERS, 3-strap type with banding (set of 2)	G5-140	\$2680.00
INTAKE/EXHAUST COVERS, Bruce's classic tri-fold (set of 4)	G5-150	\$2400.00

Section 3: Plugs & Protection

**Gulfstream Aerospace Gulfstream V, VI (C-37A), G450, G550, G650 Heat Resistant Pitot Tube Covers** are made of Naugahyde vinyl, and lined with a non-burning material. They are designed to cover the entire pitot assembly, slipping over the tube and tightening around the base with a Velcro strap detail. A "Remove Before Flight" streamer is attached to the cover. **Heat Resistant Pitot Covers** are an upgrade to our standard design, and help prevent the pitot cover from melting onto the tube if the pitot heat is accidentally turned on while installed. If you want the set tethered together, please let us know.

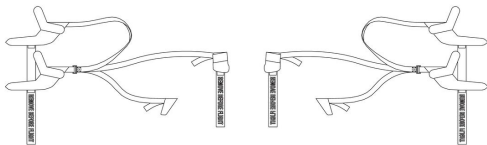
**Gulfstream Aerospace Gulfstream V, VI (C-37A), G450, G550, G650 Pitot Tube Covers NOT HEAT RESISTANT TYPE**, are made of Naugahyde vinyl, and are designed to cover the entire pitot assembly. Slipping over the tube, the cover tightens around the base with a Velcro strap detail. A "Remove Before Flight" streamer is attached to the cover. **Heat Resistant Pitot Covers** are an upgrade to this design, and help prevent the pitot cover from melting onto the tube if the pitot heat is accidentally turned on while installed. If you want the set tethered together, please let us know.

The **Engine Exhaust Plugs** are custom fit for your Gulfstream Aerospace Gulfstream V, VI (C-37A), G450, G550, G650 exhaust openings, made with heavy-duty vinyl material, and stuffed with a single block of sculpted urethane foam. Each plug has a zipper that allows the foam to be removed and dried if necessary. Exhaust plugs have 'remove before flight' streamers sewn onto the face of the plugs. Most plugs are imprinted with the aircraft registration number in black for an extra charge. Exhaust plugs may be inserted soon after flight when the engine is still warm. Engine Inlet Plugs are commonly referred to as Cowl Plugs, Intake Plugs, Cowl Blocks, Engine Blocks, and Engine Bungs.

The **Engine Inlet Plugs** are custom fit for your Gulfstream Aerospace Gulfstream V, VI (C-37A), G450, G550, G650 intakes, made with heavy-duty vinyl material, and stuffed with a single block of sculpted urethane foam. Each plug has a zipper that allows the foam to be removed and dried if necessary. Engine plugs have 'remove before flight' streamers sewn onto the face of the plugs.

Most plugs are imprinted with the aircraft registration number in black for an extra charge. Storage bag NOT included. Engine plugs may be inserted after flight when the engine is still warm. Engine Inlet Plugs are commonly referred to as Cowl Plugs, Intake Plugs, Cowl Blocks, Engine Blocks, and Engine Bungs.

G5-203



Grumman Gulfstream V, VI, VII (C-37A), G450, G550, G600, G650 Pitot Probe/Aoa Set, Heat Resistant Type (G-V And Up)

Gulfstream GVII Pitot Probes/TAT/Ice Detector Set, Heat Resistant Type

Description	Part Number	Price
INTAKE PLUGS (folding type), NSN 1730-01-667-2953 (set of 2)	G5-100	\$2365.00
EXHAUST PLUGS (folding type), NSN 1730-01667-2949 (set of 2)	G5-120	\$1380.00
APU EXHAUST PLUG, NSN 1730-01-667-2956	G5-130	\$270.00
PITOT COVERS, heat resistant type (G-V and up) (set of 4)	G5-202	\$485.00
PITOT PROBES/AOA/TAT SET, heat resistant type (G-V and up) (set of 8)	G5-203	\$655.00
PITOT PROBES/AOA/TAT SET, heat resistant type (G450 Models) (set of 7)	G5-206	\$655.00
PITOT COVERS (G450), heat resistant type (set of 3)	G5-208	\$370.00
PITOT PROBES/TAT/ICE DETECTOR SET, heat resistant type (G650 models) (set of 6)	G5-211	\$655.00
ICE DETECTOR COVERS (set of 2)	G5-214	\$150.00
PITOT PROBES/AOA/TAT/ICE DETECTOR SET, heat resistant type (G-V and up) (set of 10)	G5-215	\$795.00

Section 4: Wing/Tail/Empenage Covers

**Horizontal Stabilizer Covers** are a perfect solution to protect your paint from sun damage and prevent frost, snow, ice buildup, and corrosion. They are made from Solution-Dyed Polyester or Acrylic *Sunbrella*. They cover the entire upper surface of the stabilizers and overlap around the leading and trailing edges as well as the wing tip. The covers secure under each stabilizer with adjustable straps. In some instances, cut-outs are made in the trailing edge of the wing covers to accommodate static wicks. Horizontal Stabilizer Covers are available for winter use or long-term all year use, and are normally made from Solution-Dyed Polyester or Acrylic *Sunbrella*. A Hail Protection version can be made which incorporates dense closed cell foam into the entire upper surface of the wing covers to help prevent hail damage. Although these covers are bulky, they do help protect your wing and control surfaces against small to medium-size hail.

**ALL-YEAR USE MATERIAL** - Made with Silver Acrylic Sunbrella canvas, the all-year use material is the best option for sun protection and cover longevity. This heavier more durable material is intended for all weather conditions, such as rain and snow or lots of sun.

**WINTER USE MATERIAL** - Made with Solution-Dyed Polyester fabric, this option is intended for seasonal use to aid in deicing, rain mitigation, or for occasional travel. The material is lighter and more compact, but more susceptible to UV damage and may have a shorter useful life if used continuously outside than the all-year use material.



The **Gulfstream Aerospace Gulfstream V, VI (C-37A), G450, G550, G650 Wing Covers** are a perfect solution to protect your paint from sun damage and prevent winter frost, snow, ice buildup, and corrosion. They are made from Solution-Dyed Polyester or Acrylic *Sunbrella* and form-fit to slip around each wing tip, cover the entire upper surface of the wing and wrap around the leading and trailing edges. The covers secure under the wing with adjustable straps from the trailing edge to the leading edge. The wing covers can also attach to each other with adjustable straps at the leading and trailing edges of the wing under the belly of the plane. In some instances, cut-outs are made in the trailing edge of the wing covers to accommodate static wicks. We have the ability to also accommodate wing tip modifications, such as STOL kits, droop tips, and vortex generators. Wing covers are labeled LEFT and RIGHT for your convenience. Wing Covers are available for winter use or long-term, all-year use. A Hail Protection version can be made which incorporates very dense closed cell foam into the entire upper surface of the wing covers to help prevent hail damage. Although these covers are bulky, they do help protect your wing and control surfaces against small to medium-size hail.

**ALL-YEAR USE MATERIAL** - Made with Silver Acrylic Sunbrella canvas, the all-year use material is the best option for sun protection and cover longevity. This heavier more durable material is intended for all weather conditions, such as rain and snow or lots of sun.

**WINTER USE MATERIAL** - Made with Solution-Dyed Polyester fabric, this option is intended for seasonal use to aid in deicing, rain mitigation, or for occasional travel. The material is lighter and more compact, but more susceptible to UV damage and may have a shorter useful life if used continuously outside than the all-year use material.



Gulfstream G550 Wing/Winglet Covers



Gulfstream G550 Wing/Winglet Covers

Description	Part Number	Price
WING & WINGLET COVERS, all year use (set of 2)	G5-300	\$10280.00
WING & WINGLET COVERS, winter use (set of 2)	G5-301	\$9985.00
WING COVERS (not the winglet), all year use (set of 2)	G5-302	\$9680.00
WING COVERS (not the winglet), winter use (set of 2)	G5-303	\$9500.00
HORIZONTAL STABILIZER COVERS (set of 2)	G5-310	\$2175.00

Section 5: HeatShields & Sun Reflectors

**Cockpit Heatshields** are interior sunshades for the aircraft's cockpit. The product is a unique composite of closed-cell foam with a silver mylar finish. The semi-rigid design is stiff enough to stand inside the window framing. The set folds up flat and is easily stored in the included storage sleeve. Some designs may require velcro and suction cups. Our Heatshields for jets are offered white side out because some aircraft manufacturers have issued advisories against reflective window inserts due to potential heat damage. A Heatshield is an excellent short-term remedy for cockpit overheating, but an external fabric cover is more effective for long-term protection.



Gulfstream Cockpit Heatshields



Gulfstream Cockpit Heatshields

Description	Part Number	Price
COCKPIT HEATSHIELDS (G-V, GV-SP G550) (set of 4)	<b>G5-900</b>	<b>\$455.00</b>
COCKPIT HEATSHIELDS (GIIV-G650, G700, G800) (set of 4)	<b>G5-901</b>	<b>\$455.00</b>
COCKPIT HEATSHIELDS (GIIV-G400, G500, G600) (set of 4)	<b>G5-902</b>	<b>\$455.00</b>

## Section 6: Miscellaneous Products

**Tire or Wheelpant Covers** are designed to protect the wheelpants, or the tires and wheels, from sun damage and damage from the tow bar when moving the airplane.

**ALL-YEAR USE MATERIAL** - Made with Silver Acrylic Sunbrella canvas, the all-year use material is the best option for sun protection and cover longevity. This heavier more durable material is intended for all weather conditions, such as rain and snow or lots of sun.



Falcon 2000 Winglet Pad



Grumman Gulfstream G-V Rosemont/TAT Cover

Description	Part Number	Price
WINGLET PADDING COVERS (set of 2)	<b>G5-210</b>	<b>\$955.00</b>
NOSE GEAR TIRE COVER	<b>G5-400</b>	<b>\$535.00</b>
MAIN GEAR TIRE COVERS (specify tire size) (set of 4)	<b>G5-420</b>	<b>\$630.00</b>

## Section 7: Light Weight Products: Travel Covers and FlyAway Covers

The **Gulfstream Aerospace Gulfstream V, VI (C-37A), G450, G550, G650 Cockpit/Nose Cover** helps reduce damage to the upholstery and avionics caused by excessive heat and can eliminate problems caused by leaking door and window seals. They keep the windshield and window surfaces clean and help prevent vandalism and theft.

The **Gulfstream Aerospace Gulfstream V, VI (C-37A), G450, G550, G650 Cockpit/Nose Cover** is designed to cover the windshield and side windows of the cockpit. Attachment buckles are made of nonmetal *Delrin*, designed for rugged outdoor use. The windshield cover comes with a duffle bag. The N-number can be imprinted onto the cover for an extra charge. The windshield cover is trimmed in the colors of the aircraft.

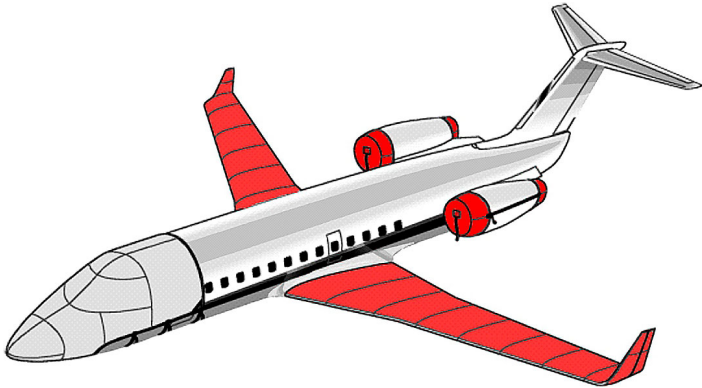
This cover type is made from Silver Acrylic Sunbrella canvas and is 100% lined with a soft and smooth microfiber. Bruce's Custom Covers developed this material combination especially for aircraft protection. The outer material is medium weight and treated for water resistance, UV resistance and anti-static buildup. The inner lining is a very soft and smooth microfiber to prevent scratching. The material is very reflective, and tests show that the cabin interior temperature can be reduced to near-ambient temperature on the hottest of days. It is water, ice and snow repellent, yet breathable to allow moisture to escape from between the cover and the aircraft surface.

The **Gulfstream Aerospace Gulfstream V, VI (C-37A), G450, G550, G650 Lightweight Travel Canopy Cover** will cover the same area as our standard Canopy Cover, but the material used is very lightweight and will fold up and store in a much smaller space. This cover is ideal for the airplane that is hangered full time and only needs a cover on rare occasions.

Travel Covers are made with Silver Solution-Dyed Polyester fabric and only lined over the windshield to save weight. The material is lightweight and more compact for easy stowage in the aircraft. The polyester material is water resistant, but only intended for occasional use outside. We also have an ultra lightweight material available for fitted hangar dust covers. For daily outdoor use, the non-travel Sunbrella Cover is the best choice.



G-V Cockpit/Windshield Cover (Illustration)



Exterior Covers for the Bombardier Global Express

Description	Part Number	Price
TRAVEL COVER, Light Weight Travel Cockpit Cover (G450 & G550)	G5-011	\$1525.00
STORAGE DUFFLE for INTAKE PLUG SET	G5-800	\$200.00
STORAGE DUFFLE for EXHAUST PLUG SET	G5-805	\$180.00

**Prices subject to change. Other Covers and Design Alterations: Prices on request.**  
**Prices are FOB Morgan Hill, CA. Sales tax on orders shipped to California addresses. Orders take approximately 3 weeks to complete. For domestic orders we normally ship by UPS ground service. Next day shipping and air parcel post is available on request. We can take payment by Visa, Mastercard, American Express, or Discover.**

**Bruce's Custom Covers offers protective covers and plugs for virtually every type of airplane, jet and helicopter. If you have questions about our products please call any time TOLL FREE: 800/777-6405, or FAX: 408/738-2729.**



## Aircraft Cover Ordering Form

<b>Customer Info</b>	Name _____
	Shipping Address _____ _____
	Phone & Email _____
<b>Payment</b>	Credit Card Number <input type="text"/> <input type="text"/> <input type="text"/> <input type="text"/> <input type="text"/> <input type="text"/> <input type="text"/> <input type="text"/> <input type="text"/> <input type="text"/> <input type="text"/> <input type="text"/> <input type="text"/> <input type="text"/> <input type="text"/> <input type="text"/>
	Exp. Date <input type="text"/> <input type="text"/> / <input type="text"/> <input type="text"/> V-Code* <input type="text"/> <input type="text"/> <input type="text"/> <input type="text"/> <small>*Visa, Mastercard, Discover: last 3 numbers on back of card, right of signature. Amex: 4 smaller numbers printed on face of card.</small>
<b>A/C Info</b>	Reg / Tail Number: _____ Aircraft Type: _____ Year: _____
	Colors / Paint Scheme (be specific): _____

### Please specify below the items you would like to order.

See technical sheet or visit our website for part numbers (or just fill in the description)

1	Part Number	Quant	Description	Price
2				
3				
4				
5				
6				
7				
8				
9				
10				
				<b>TOTAL</b>

#### Optional Items (check the box of the item you want)

- ☐ Imprint aircraft registration number onto both sides of canopy cover.....\$35.00
- ☐ Imprint aircraft registration number onto jet intake covers.....\$55.00